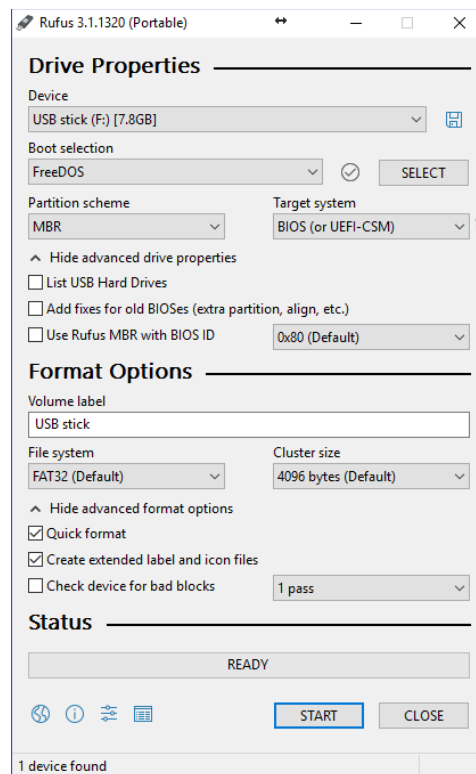
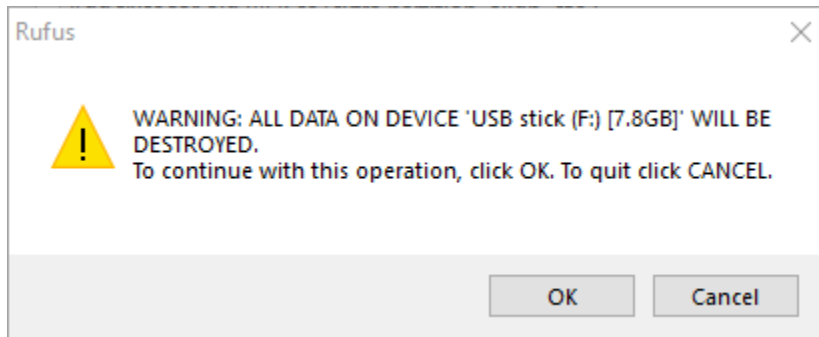


Create UEFI update USB

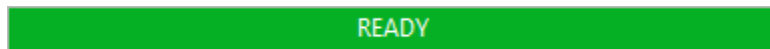
1. Obtain a USB stick with between 256MB and 64GB that fits in the OnDemands USB port.
2. Go to a Windows computer (Windows 7, 8, 8.1 or 10)
3. On the computer download [RUFUS](#) portable ([direct link](#))
 - If you downloaded it as an installer please install it, if you downloaded the portable version simply place it where you can find it
4. Select the USB stick from the **Device** dropdown
 - *NB! It's very important you pick the right one as we are about to format the drive. This means any data still on the USB drive will be lost if not backed up elsewhere. Choosing a wrong USB disk can result in severe data loss so do this with caution.*
5. In the **Boot selection** dropdown choose **FreeDOS**
6. Leave **Partition scheme** and **Target system** as they are.
7. Do not choose any advanced drive properties
8. In **Volume label** choose a name in the box below (example: "UEFI update USB")
9. Set **File system** to default FAT32
10. Set **Cluster size** to Default 4096 bytes
11. Do not change any advanced format options (leave **Quick format** and **Create extended label and icon files** checked)



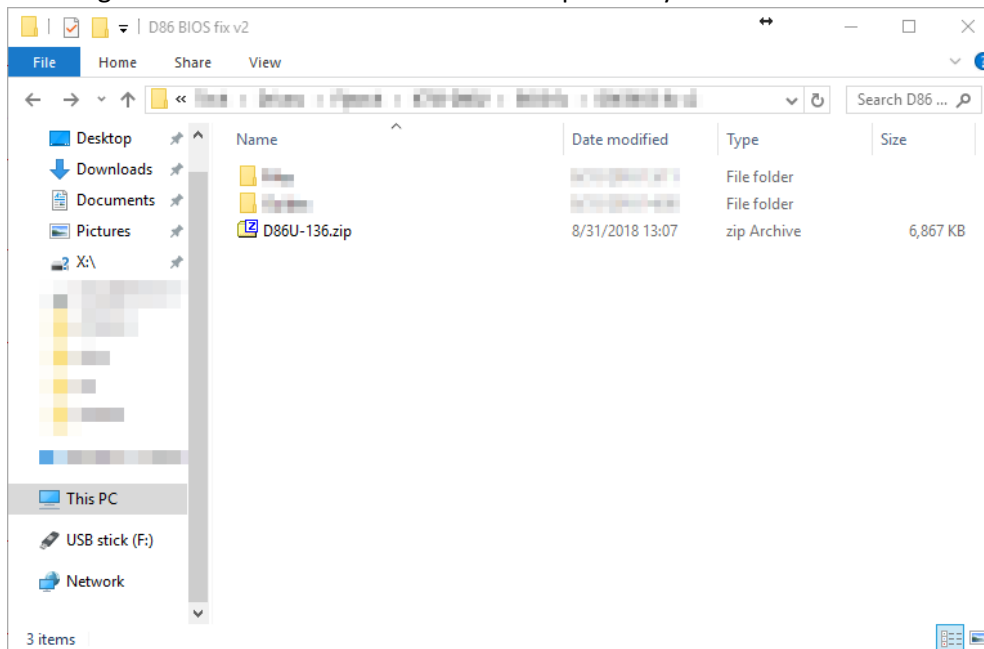
12. Press Start. A Dialog WARNING will display for you to know the data on the USB drive will be lost



13. Click OK if you are sure you are targeting the right USB stick and no data is lost
14. Now wait around, this process will take a few minutes to complete. Once it is done it will say **READY**



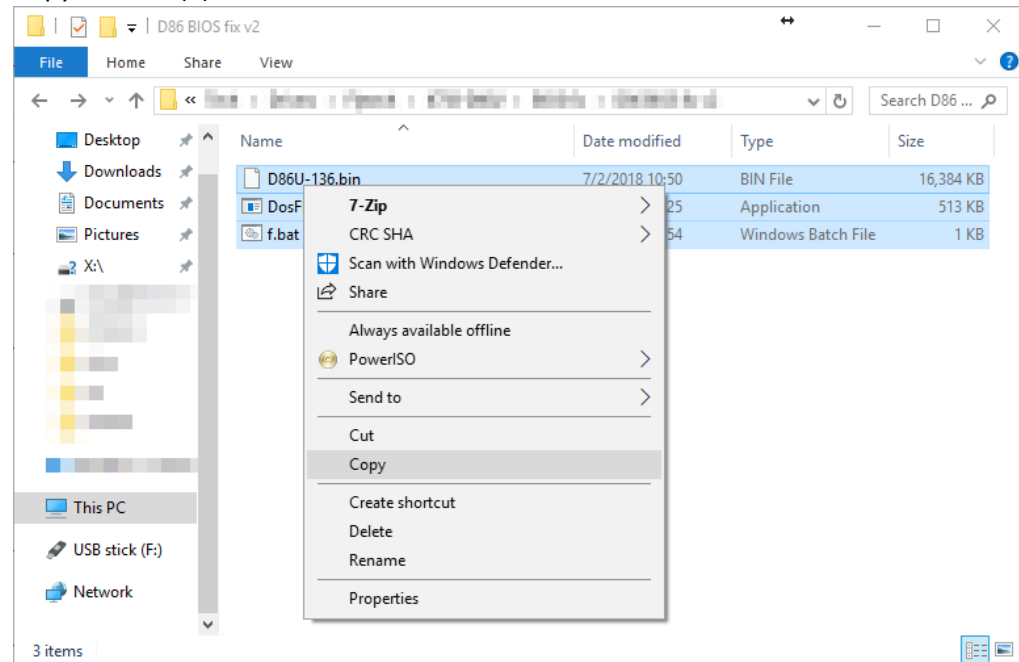
15. Now navigate to the folder with the D86u-136.zip folder you received from Wexer



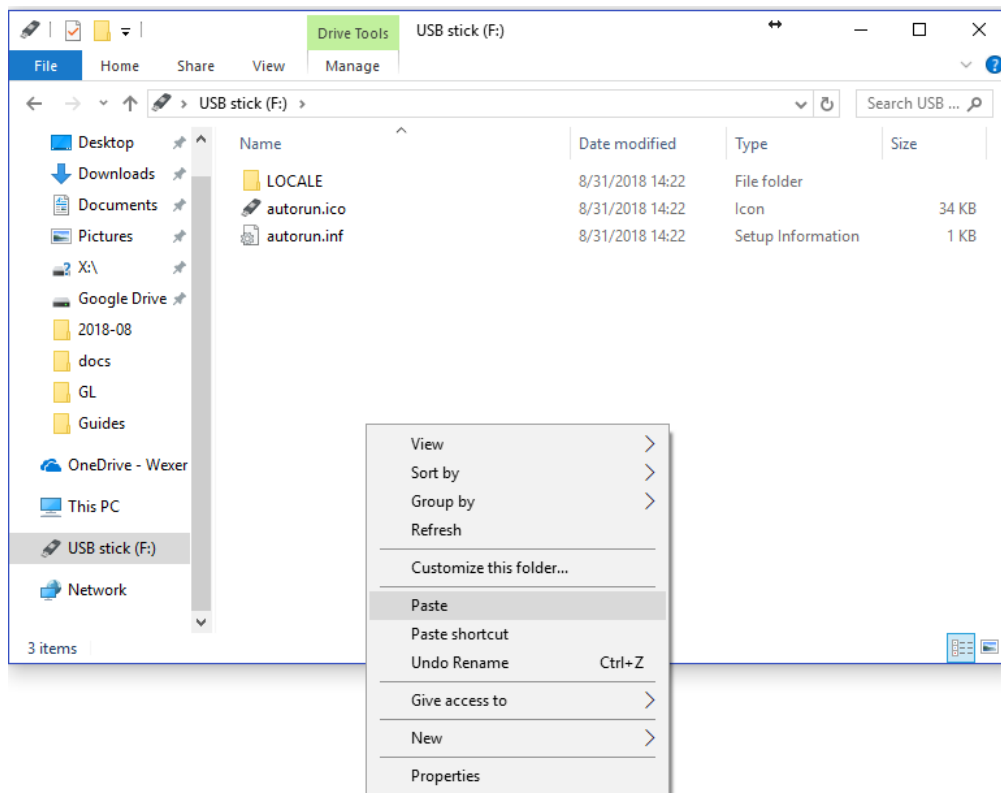
16. Rick-click the zip archive and press Extract here
 - Alternatively open the folder and drag the files inside out.
17. Now you have three files:
- D86U-136.bin
 - DosFlash.exe

- f.bat

Copy all three(3) files to the USB stick we formatted with RUFUS earlier.



18. Paste the files:



19. You have now successfully create a bootable UEFI update USB

- This is what you should see on the USB:

